

Klixon® AT One-Pole and Two-Pole Side Plate Package Designs

- Available in a wide variety of packaging styles
- Packaging options are available for one, two, or multiple poles
- Custom packaging is available to suit your needs, whatever they may be



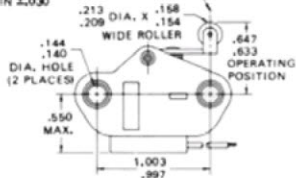
Listed below is information about three popular devices in this category. *Please scroll down.*

Typical One and Two Pole Side Plate Package Designs

AT355
10AT313



CENTER LINE OF ROLLER TO BE IN LINE WITH CENTER LINE OF MOUNTING HOLE WITHIN $\pm .030$



Typical Actuation Characteristics

Maximum Actuating Force (STP) 24 oz.

Minimum Release Force (STP) 4 oz.

Plunger Seal - - -

Maximum Pretravel .040 inch

Maximum Movement
Differential .030 inch

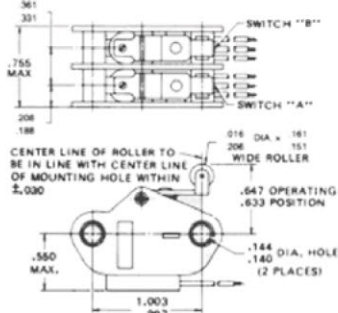
Minimum Overtravel .125 inch

Positive Overtravel Stop No

Maximum Force on Actuator 10 lb.

Leads can be configured to exit a side plate package in any direction. Contact Sensata Technologies for configurations other than those shown.

**AT357
10AT315**



Typical Actuation Characteristics

Maximum Actuating Force (STP) 24 oz.

Minimum Release Force (STP) 4 oz.

Plunger Seal - - -

Maximum Pretravel .040 inch

Maximum Movement Differential .030 inch

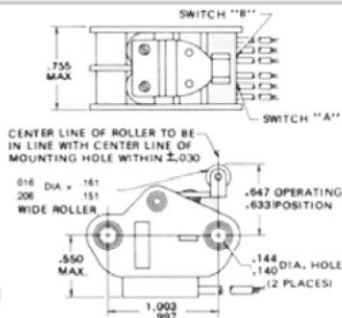
Minimum Overtravel .125 inch

Positive Overtravel Stop No

Maximum Force on Actuator 10 lb.

Leads can be configured to exit a side plate package in any direction. Contact Sensata Technologies for configurations other than those shown.

**AT356
10AT314**



Typical Actuation Characteristics

Maximum Actuating Force (STP) 48 oz.

Minimum Release Force (STP) 4 oz.

Plunger Seal - - -

Maximum Pretravel .040 inch

Maximum Movement Differential .040 inch

Minimum Overtravel .125 inch

Positive Overtravel Stop No

Maximum Force on Actuator 10 lb.

Leads can be configured to exit a side plate package in any direction. Contact Sensata Technologies for configurations other than those shown.