



Balanced-Force Design  
Hermetically sealed  
Meets the standards and requirements of

**MIL-PRF-6106**

**PRINCIPLE TECHNICAL CHARACTERISTICS**

Contacts rated at **28 Vdc and 115 Vac, and 115/200 Vac, 400Hz, 3 Ø**

Weight **See Mounting**  
Special units available upon request, including models with auxiliary contacts.

**APPLICATION NOTES:**

- [101](#)
- [102](#)
- [007](#)

**CONTACT ELECTRICAL CHARACTERISTICS**

| Contact rating per pole and load type | Load current in Amps |                   |                            |            |            |                               |
|---------------------------------------|----------------------|-------------------|----------------------------|------------|------------|-------------------------------|
|                                       | 28 Vdc               | 115 Vac<br>400 Hz | 115/200 Vac<br>400 Hz, 3 Ø | 28 Vdc [3] | 28 Vdc [7] | DELTA<br>115/200 Vac<br>60 Hz |
| Resistive                             | 50                   | 180               | 120                        | 120        | 200        | 60                            |
| Inductive [2]                         | 30                   | 180               | 120                        | 80         | -          | 60                            |
| Motor                                 | 30                   | 80                | 80                         | 80         | -          | 60                            |
| Load transfer, resistive[6]           | -                    | -                 | 120                        | -          | -          | -                             |



**Leach International**  
www.leachintl.com

**North America**  
6900 Orangethorpe Ave.  
P.O. Box 5032  
Buena Park, CA 90622 USA

Tel: (01) 714-736-7599  
Fax: (01) 714-670-1145

**Europe, SA**  
2 Rue Goethe  
57430 Sarralbe  
France

Tel: (33) 3 87 97 98 97  
Fax: (33) 3 87 97 84 04

**Asia-Pacific Ltd.**  
20/F Shing Hing Commercial Bldg.  
21-27 Wing Kut Street  
Central, Hong Kong

Tel: (852) 2 191 2886  
Fax: (852) 2 389 5803

Data sheets are for initial product selection and comparison. Contact Leach International prior to choosing a component.

**COIL CHARACTERISTICS (Vdc)****SERIES ZJ**

| CODE  | A    | B    | C   | F<br>Vac<br>400 Hz | N [5] | Y [8] | YN<br>[5] |
|---|------|------|-----|--------------------|-------|-------|-----------|
| Nominal operating voltage                     | 28   | 12   | 6   | 115                | 28    | 28    | 28        |
| Maximum operating voltage                     | 29   | 14.5 | 7.3 | 124                | 29    | 29    | 29        |
| Maximum pickup voltage                        |      |      |     |                    |       |       |           |
| - Nominal                                     | 18   | 9    | 4.5 | 90                 | 18    | 18    | 18        |
| - High temp test                              | 20   | 10   | 5   | 95                 | 20    | 20    | 20        |
| - Continuous current test                     | 22.5 | 11   | 5.7 | 100                | 22.5  | 22.5  | 22.5      |
| Drop-out voltage, maximum                     | 7    | 4.5  | 2.5 | 30                 | 7     | 7     | 7         |
| Coil resistance in Ohms $\pm 10\%$ at +25° C  | 113  | 28   | 7   | -                  | 113   | -     | -         |
| Coil current Amp max. @ Nom. Volt. and +25° C | 0.31 | 0.60 | 1.2 | 0.12               | 0.31  | -     | -         |

**GENERAL CHARACTERISTICS**

|   |  |
|---|--|
| Temperature range   | -55°C to +71°C   |
| Minimum operating cycles (life) at rated load                 | 50,000   |
| Minimum operating cycles (life) at 25% rated load             | 100,000  |
| Dielectric strength at sea level                              |  |
| - All circuits to ground and circuit to circuit               | 1500 Vrms  |
| - Coil to ground and Aux. contacts                            | 1250 Vrms  |
| Dielectric strength at altitude                               | 700 Vrms (Main contacts)<br>500 Vrms (Coil and Auxiliary contacts) |
| Insulation resistance   |  |
| - Initial (500 Vdc)   | 100 M $\Omega$ min   |
| - After environmental tests (500 Vdc)                         | 50 M $\Omega$ min  |
| Sinusiodal vibration (55 to 1000 Hz)                          | 10 G   |
| Shock (10-12 ms duration)                                     | 15 G   |
| Maximum contact opening time under vibration and shock        | 10 $\mu$ s   |
| Operate time at nominal voltage (Including bounce)            | 60 ms max<br>25 ms max (Economizer coil)                           |
| Release time at nominal voltage (Including bounce)            |  |
| -DC   | 40 ms max  |
| -AC   | 125 ms max   |
| Release time at nominal voltage (Including bounce):Economizer |  |
| -DC   | 35 ms max  |
| -AC   | 100 ms max   |

**GENERAL CHARACTERISTICS CONTINUED****SERIES ZJ**

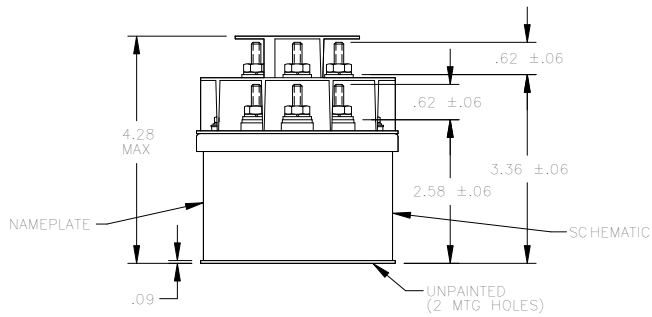
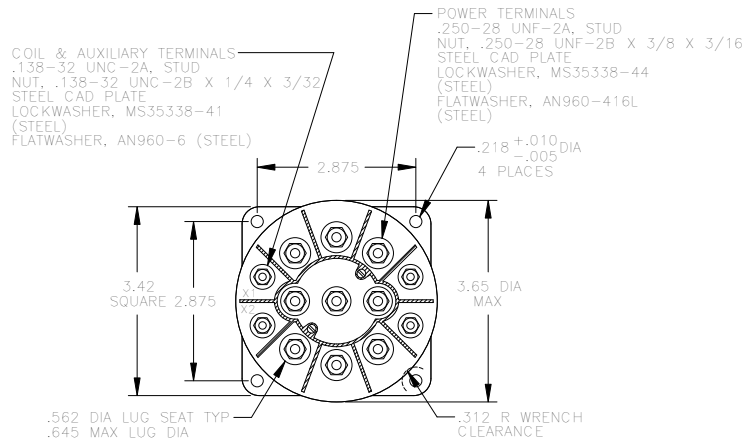
|                                   |                                |
|-----------------------------------|--------------------------------|
| Contact bounce at nominal voltage | 4 ms max                       |
| Weight                            | Noted                          |
| Overload                          | 1000 Amp @ 115/200 Vac, 400 Hz |
| Rupture                           | 1500 Amp @ 115/200 Vac, 400 Hz |
| Altitude                          | 50,000 Feet                    |

**NUMBERING SYSTEM**

|                                       |    |   |   |   |   |
|---------------------------------------|----|---|---|---|---|
|                                       | ZJ | - | X | 0 | X |
| Relay family_____                     |    |   |   |   |   |
| 1-Mounting Style(A,B,Etc.)_____       |    |   |   |   |   |
| 2-Terminal & Circuit(1,2,3,Etc) _____ |    |   |   |   |   |
| 3-Coil Voltage(A,B,C,F,N,Y,YN)_____   |    |   |   |   |   |

**NOTES**

- [1] Auxiliary contact rating - see page 5, note [2].
- [2] Inductive load life, 20,000 cycles.
- [3] Rating are for double break/make terminal type 6.
- [4] Alternate contact configurations and other special models available upon request. Please contact factory.
- [5] Back EMF suppression to 62 Volts Max.
- [6] Suitable for transfer between unsynchronized AC power sources at rating shown.
- [7] 200 Amps resistive, 25,000 cycles only, terminal style 6.
- [8] Economizer coils have a lower resistance primary coil for faster operate time. Once relay operates, the coil switches to a higher resistance for lower power drain. Do not ramp up voltage on these coils.
- 9. This series drawing is for general use only. Please consult factory for special requirements.

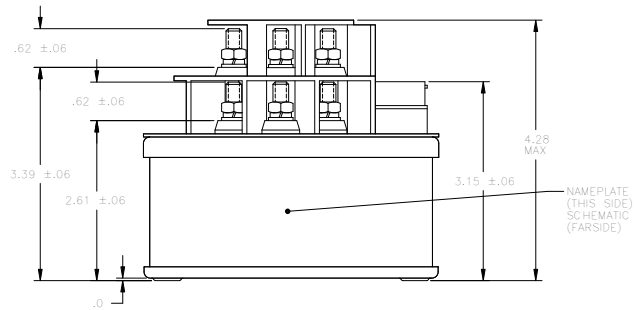
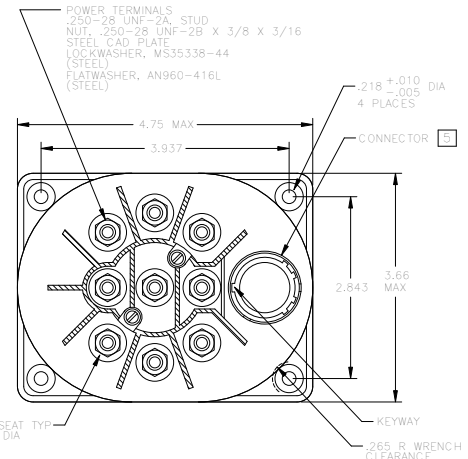
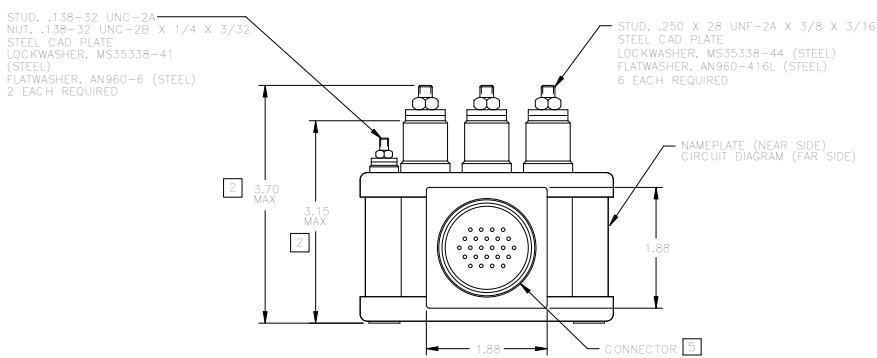
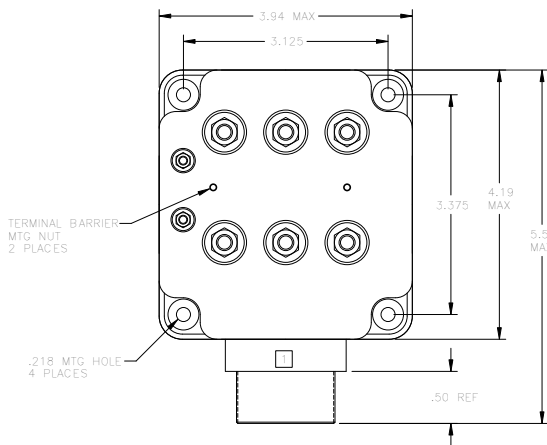


MOUNTING STYLE A

WEIGHT: 2 LB MAXIMUM  
 WEIGHT IS DEPENDENT UPON CONFIGURATION REQUIRED.  
 PLEASE CONSULT FACTORY.

MOUNTING STYLE H

WEIGHT: 2 LB 8 OZ MAXIMUM

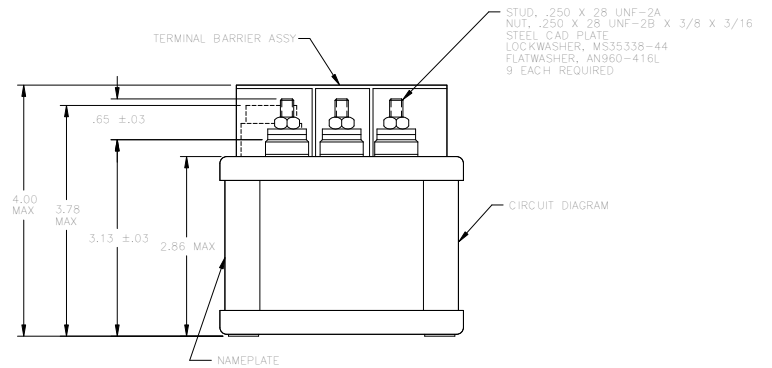
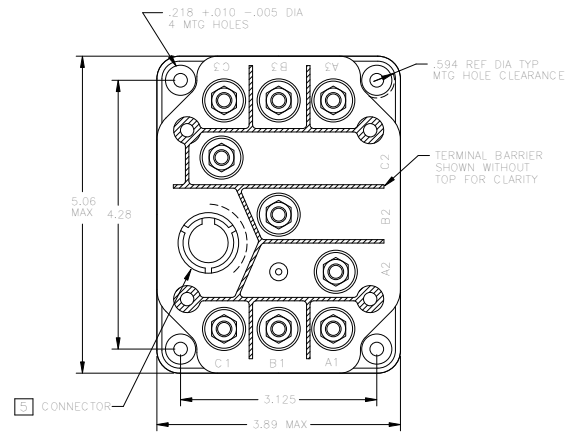


MOUNTING STYLE B

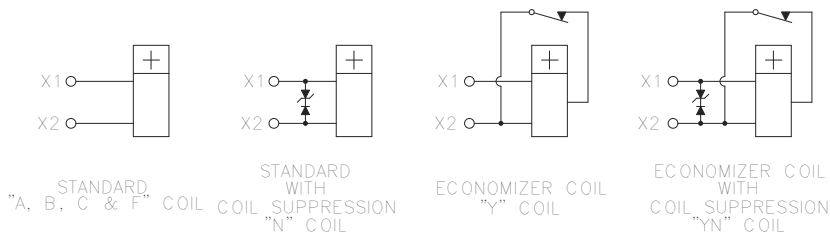
WEIGHT: 2 LB 12 OZ MAXIMUM  
 WEIGHT IS DEPENDENT UPON CONFIGURATION REQUIRED.  
 PLEASE CONSULT FACTORY.

MOUNTING STYLE K

WEIGHT: 2 LB 13 OZ MAXIMUM



COIL CIRCUIT CONFIGURATION

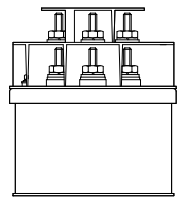
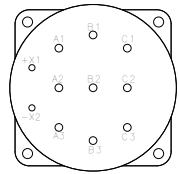
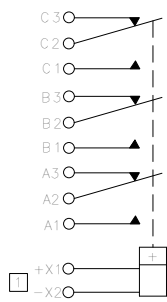


NOTES:

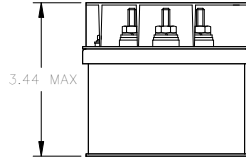
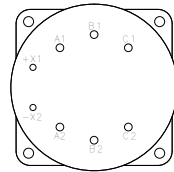
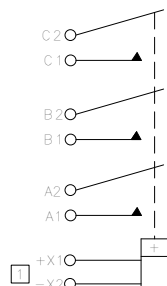
- 1 CAN BE DELETED.
- 2 MAXIMUM DIMENSIONS CAN BE REDUCED BY .500 INCH.
- 3 POLARITY INDICATION APPLIES TO D.C. COILS ONLY.
- 4 COIL TERMINALS MAY BE IDENTIFIED AS A-B OR X1-X2.
- 5 CIRCULAR CONNECTOR MS-STYLE OR EQUIVALENT

Standard Tolerance: .XX ±.03. .XXX ±.010

TERMINAL TYPE 1  
3 PDT

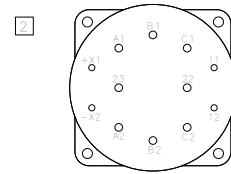
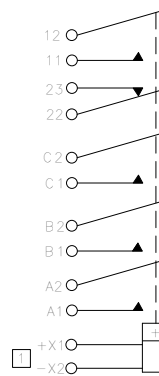


TERMINAL TYPE 2  
3 PST-N.O.



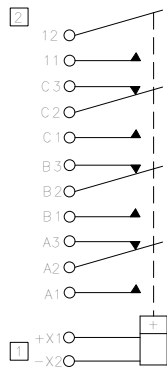
AVAILABLE MOUNTING STYLES: A (SHOWN), B, H AND K

TERMINAL TYPE 3  
3 PST-N.O. WITH  
SPST-N.O. & SPST-N.C.  
AUXILIARY CONTACTS



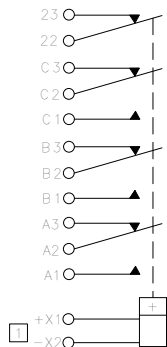
AVAILABLE MOUNTING STYLES: A (SHOWN), B, H AND K

TERMINAL TYPE 4  
3 PDT WITH SPST-N.O.  
AUXILIARY CONTACTS

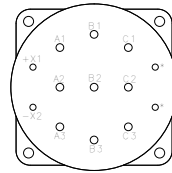


AVAILABLE MOUNTING STYLES: A, B AND K

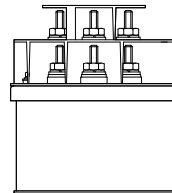
TERMINAL TYPE 5  
3 PDT WITH SPST-N.C.  
AUXILIARY CONTACTS



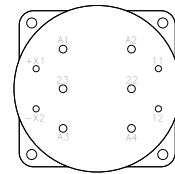
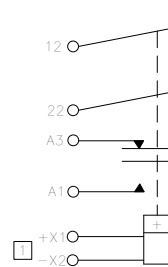
AVAILABLE MOUNTING STYLES: A (SHOWN), B AND K



\*SEE CIRCUIT DIAGRAM FOR AUX CONTACT TERMINAL IDENTIFICATION

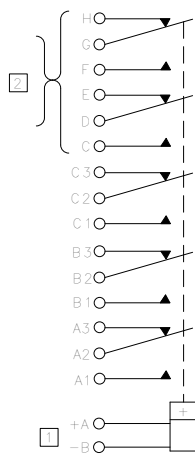


TERMINAL TYPE 6  
SPDT-DOUBLE BREAK/MAKE  
WITH SPST-N.O. & SPST-N.C.  
AUXILIARY CONTACTS



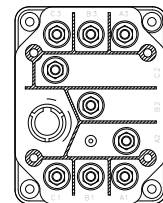
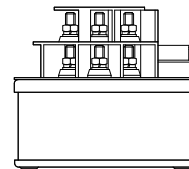
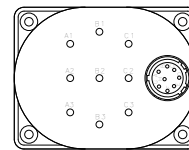
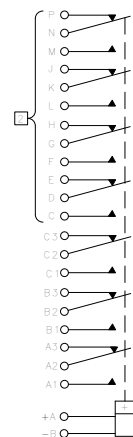
AVAILABLE MOUNTING STYLES: A (SHOWN), B AND K

TERMINAL TYPE 7  
3 PDT WITH 2 PDT  
AUXILIARY CONTACTS



AVAILABLE MOUNTING STYLES: B AND K

TERMINAL TYPE 8  
3 PDT WITH 4 PDT  
AUXILIARY CONTACTS



AVAILABLE MOUNTING STYLES: B AND K (BOTH SHOWN)

### TERMINAL TYPE 9

IS A GENERAL CATEGORY USED FOR ALL TERMINAL TYPES NOT ILLUSTRATED. FOR OTHER VARIATIONS OF TERMINAL CONFIGURATIONS—PLEASE CONTACT FACTORY.

1 POLARITY INDICATION APPLIES TO D.C. COILS ONLY

2 AUXILIARY CONTACT RATING 28 VDC OR 115 VAC

RESISTIVE 5 AMP

INDUCTIVE 3 AMP

LAMP 1 AMP

BOUNCE AT NOMINAL VOLTAGE .004 SEC MAX

OTHER AUXILIARY CONTACT FORMS AVAILABLE, INCLUDING LOW LEVEL CAPACITY

NOTE: Although all configuration and/or terminal type options are available, some combinations may require a setup charge and be subject to minimum order size.

## DERATING OF CONTACTS FOR DC VOLTAGES ABOVE NOMINAL RATING

To establish a standard for the derating of relay contacts is, at best, a subjective practice. Limitations are governed by the type of relay, contact gap, maximum voltage capabilities of the relay contact system, and the contact material.

The most common method is to derate the contacts by use of the Power Formula, using the known current and voltage.

This method is valid only for **Resistive Loads**, and is an approximation only; keeping in mind the limitations mentioned above.

$$\text{Power} = IE \text{ (Current x Voltage)}$$

$$I_2 E_2 = 2/3 I_1 E_1$$

Example:

A designer is working with a 55 volt DC system and has a relay rated at 10 amps resistive at 28 volts DC. What is the maximum current that can be switched at 55 Vdc.

$$I_1 = 10 \text{ Amperes}$$

$$E_1 = 28 \text{ VDC}$$

$$E_2 = 55 \text{ VDC}$$

$$I_2 = ? \text{ (Current ratings at 55 VDC Resistive)}$$

$$I_2 E_2 = 2 I_1 E_1 / 3$$

$$I_2 = 2 I_1 E_1 / E_2 \cdot 3$$

$$= 2 (10 \times 28) / 55 \times 3$$

$$= 560 / 165$$

$$I_2 = 3.4 \text{ Amperes at 55VDC}$$

In addition, the user should always be concerned about the following:

1. Derating contacts that are rated for less than 10 Amperes at nominal voltage.
2. Derating contacts for use in system voltages above 130 Volts DC

**RELAYS AND TEMPERATURE VARIATIONS**

Most relay parameters are specified as maximum values over the rated temperature range of the specific relay. Users often find that key parameters differ significantly at ambient temperature (20-25°C) and sometimes fall into the trap of specifying their system around these ambient parameters. Additionally the actual temperature experienced by the relay can be far in excess of existing ambient temperatures due to the heat generated by the coil current and the contact load. Figure 1 is the summary of temperature effects on relay electrical characteristics.

| Temperature | Resistance | Current | Operating Voltage | Release Voltage | Operate Time | Release Time |
|-------------|------------|---------|-------------------|-----------------|--------------|--------------|
| Increase    | UP         | DOWN    | UP                | UP              | UP           | UP           |
| Decrease    | DOWN       | UP      | DOWN              | DOWN            | DOWN         | DOWN         |

**Fig. 1**

The following formulas are sometimes useful in calculating the effects shown above.

1. Change in coil resistance due to change of ambient temperature can be calculated by the following formula.

$$R = R_{20} [1 + .0039 (T-20)]$$

Where: R = Coil resistance at given temperature  
 R<sub>20</sub> = Coil resistance at 20°C  
 T = °C Ambient temperature

"Rule of Thumb" : For each 10°C change of temperature, coil resistance will change approximately 4%.

2. High and low temperature pick up voltage:

$$E_2 = E_1 K_2,$$

Where: E<sub>2</sub> = Pick Up Voltage at T<sub>2</sub> temperature  
 E<sub>1</sub> = Pick Up Voltage at 20°C  
 K<sub>2</sub> = Coefficient of correction found on the graph in Fig. 2 at T<sub>2</sub>

3. Calculation of coil temperature rise when R initial and R final are known:

$$\Delta T = (234.5 + T_1) (R_2/R_1 - 1)$$

$\Delta T$  = Temperature rise (°C)

$T_1$  = Initial temperature (°C)

$R_1$  = Initial resistance (Ohms)

$R_2$  = Final resistance (Ohms)

$$R_2 = K_2 R_1$$

Temperature can also be found by making the  $R_2/R_1$  ratio = the coefficient of correction graph in Fig. 2, and then finding the corresponding temperature.

### TEMPERATURE CORRECTION CHART FOR RESISTANCE

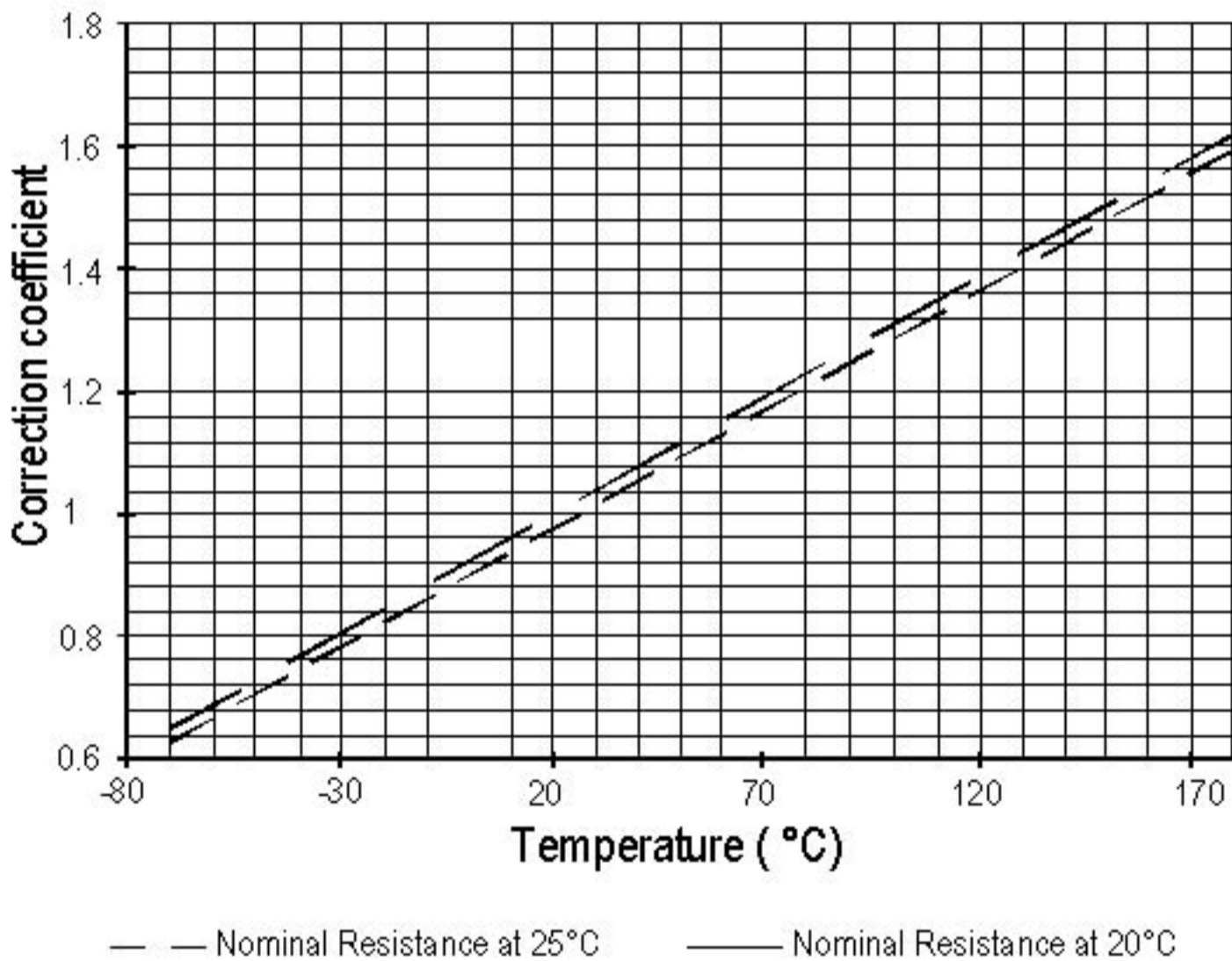


Fig. 2

EXAMPLE:

Catalog indicates coil resistance of 290 ohm at 25°C. What is the value at 125°C?

From the chart:  $290 \times 1.39 = 403.31$  Ohms.

### SUPPRESSOR DEVICES FOR RELAY COILS

The inductive nature of relay coils allows them to create magnetic forces which are converted to mechanical movements to operate contact systems. When voltage is applied to a coil, the resulting current generates a magnetic flux, creating mechanical work. Upon deenergizing the coil, the collapsing magnetic field induces a reverse voltage (also known as back EMF) which tends to maintain current flow in the coil. The induced voltage level mainly depends on the duration of the deenergization. The faster the switch-off, the higher the induced voltage.

All coil suppression networks are based on a reduction of speed of current decay. This reduction may also slow down the opening of contacts, adversely effecting contact life and reliability. Therefore, it is very important to have a clear understanding of these phenomena when designing a coil suppression circuitry.

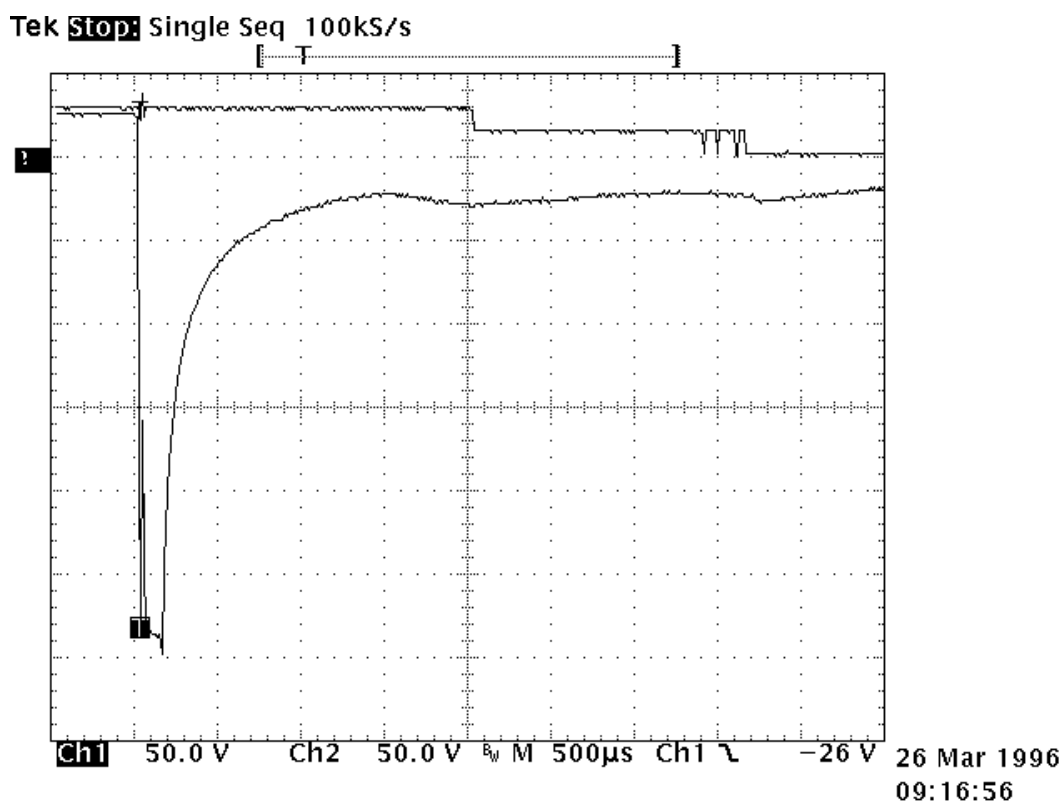
#### Typical coil characteristics

On the graph below, the upper record shows the contacts state. (High level NO contacts closed, low level NC contacts closed, intermediate state contact transfer). The lower record shows the voltage across the coil when the current is switched off by another relay contact.

The surge voltage is limited to -300V by the arc generated across contact poles. Discharge duration is about 200 microseconds after which the current change does not generate sufficient voltage. The voltage decreases to the point where the contacts start to move, at this time, the voltage increases due to the energy contained in the NO contact springs. The voltage decreases again during transfer, and increases once more when the magnetic circuit is closed on permanent magnet.

Operating times are as follows:  
 Time to start the movement 1.5ms  
 Total motion time 2.3ms  
 Transfer time 1.4ms

Contact State



## Types of suppressors:

### Passive devices.

#### The resistor capacitor circuit

It eliminates the power dissipation problem, as well as fast voltage rises. With a proper match between coil and resistor, approximate capacitance value can be calculated from:

$$C = 0.02 \times T/R, \text{ where}$$

T = operating time in milliseconds

R = coil resistance in kiloOhms

C = capacitance in microFarads

The series resistor must be between 0.5 and 1 times the coil resistance. Special consideration must be taken for the capacitor inrush current in the case of a low resistance coil.

The record shown opposite is performed on the same relay as above. The operation time becomes:

- time to start the movement 2.3ms

- transfer time 1.2ms

The major difficulty comes from the capacitor volume. In our example of a relay with a  $290 \Omega$  coil and time delay of 8 ms, a capacitance value of  $C=0.5 \mu\text{F}$  is found. This non polarized capacitor, with a voltage of 63V minimum, has a volume of about  $1\text{cm}^3$ . For 150V, this volume becomes  $1.5 \text{cm}^3$ .



### The bifilar coil

The principle is to wind on the magnetic circuit of the main coil a second coil shorted on itself. By a proper adaptation of the internal resistance of this second coil it is possible to find an acceptable equilibrium between surge voltage and reduction of the opening speed. To be efficient at fast voltage changes, the coupling of two coils must be perfect. This implies embedded windings. The volume occupied by the second coil reduces the efficiency of the main coil and results in higher coil power consumption. This method cannot be applied efficiently to products not specifically designed for this purpose.

### The resistor (parallel with the coil)

For efficient action, the resistor must be of the same order of magnitude as the coil resistance. A resistor 1.5 times the coil resistance will limit the surge to 1.5 times the supply voltage. Release time and opening speed are moderately affected. The major problem is the extra power dissipated.

### **Semi-conductor devices**

#### The diode

It is the most simple method to totally suppress the surge voltage. It has the major disadvantage of the higher reduction of contact opening speed. This is due to the total recycling, through the diode, of the energy contained in the coil itself. The following measurement is performed once again on the same relay. Operation times are given by the upper curve:

- time to start the movement 14ms
- transfer time 5ms

These times are multiplied by a coefficient from 4 to 8.

The lower curve shows the coil current. The increase prior to NO contact opening indicates that the contact spring dissipates its energy. At the opening time the current becomes constant as a result of practically zero opening speed.

Due to this kind of behavior, this type of suppression must be avoided for power relays. For small relays which have to switch low currents of less than 0.2 A, degradation of life is not that significant and the method may be acceptable.



The diode + resistor network

It eliminates the inconvenience of the resistor alone, explained above, and it limits the action of a single diode. It is now preferred to use the diode + zener network.

The diode + zener network

Like the resistor, the zener allows a faster decurrent decay. In addition it introduces a threshold level for current conduction which avoids the recycling of energy released during contact movement.

The lower curve on the opposite record demonstrates those characteristics. Voltage limitation occurs at 42V. The two voltage spikes generated by internal movement are at lower levels than zener conduction. As a result, no current is recycled in the coil.

The opening time phases are as follows:

- time to start the movement 2.6ms
- total motion time 2.4ms
- transfer time 1.4ms

The release time is slightly increased. The contacts' opening speed remains unchanged.

