

ENGINEERING DATA SHEET

SERIES WL-X9YN

PLUG-IN CONTACTOR, MAGNETIC LATCH
3 PST/NO, 385 AMP



Line Replaceable Contactor (LRC)
Balanced-Force design, latching
Meets the standards and requirements of **MIL-PRF-6106**
Contact arrangement **3 PST/NO**

PRINCIPLE TECHNICAL CHARACTERISTICS

Contacts rated at **28 Vdc and 115/200Vac, 400Hz, 3Ø**
Weight **3.50lbs max**
Dimensions **4.43 in. x 4.43 in. x 3.70 in.**
Special units available upon request, including models with auxiliary contacts.

CONTACT ELECTRICAL CHARACTERISTICS

Contact rating per pole and load type	Load current in Amps
	115/200 Vac, 400 Hz, 3Ø
Resistive	385
Inductive	385
Motor	245



Leach International
www.leachintl.com

North America
6900 Orangethorpe Ave.
P.O. Box 5032
Buena Park, CA 90622 USA

Tel: (01) 714-736-7599
Fax: (01) 714-670-1145

Europe, SA
2 Rue Goethe
57430 Sarralbe
France

Tel: (33) 3 87 97 98 97
Fax: (33) 3 87 97 84 04

Asia-Pacific Ltd.
20/F Shing Hing Commercial Bldg.
21-27 Wing Kut Street
Central, Hong Kong

Tel: (852) 2 191 2886
Fax: (852) 2 389 5803

Data sheets are for initial product selection and comparison. Contact Leach International prior to choosing a component.

COIL CHARACTERISTICS (Vdc)**SERIES WL-X9YN**

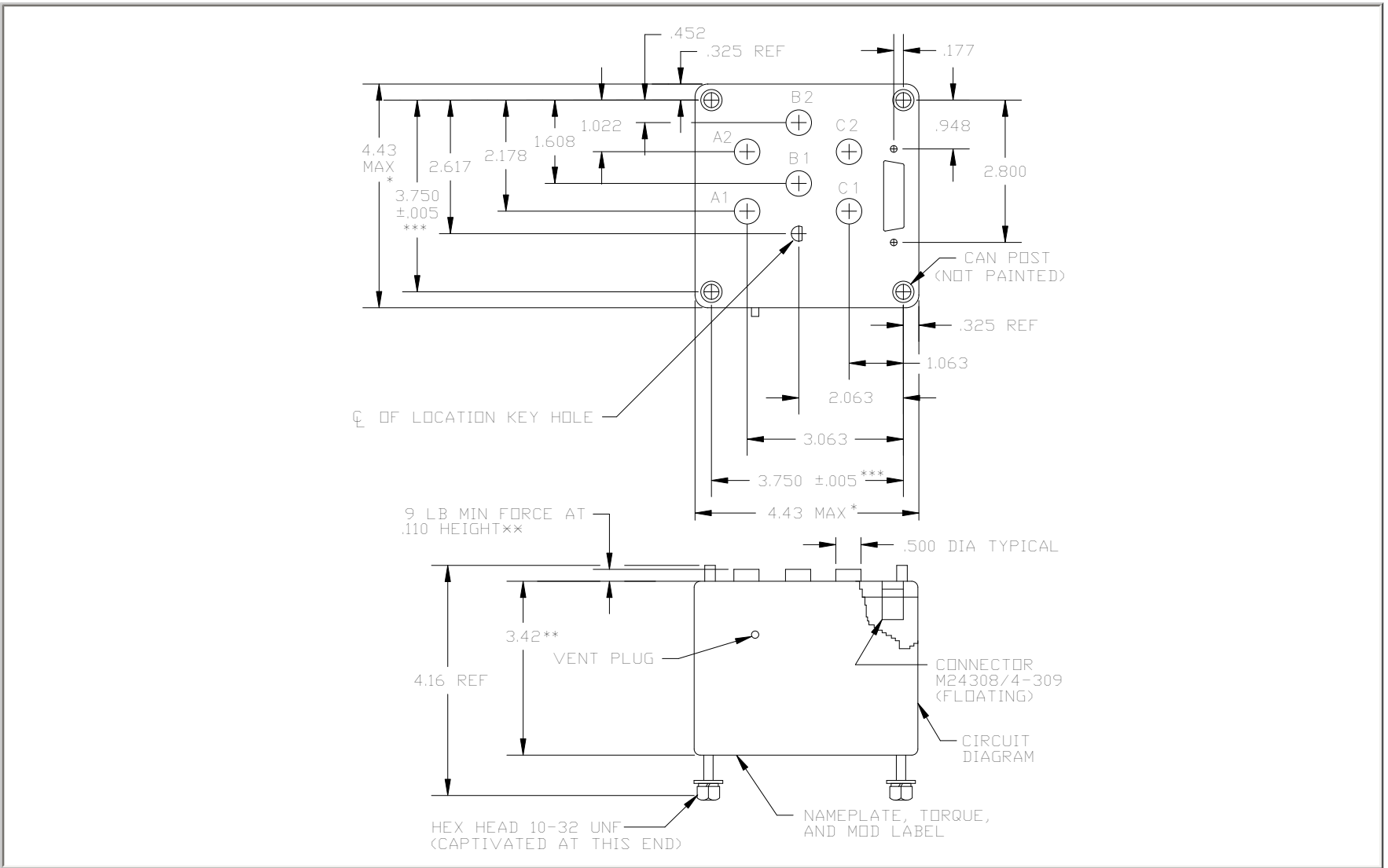
Nominal operating voltage	28 Vdc
Duty Cycle	200ms ON; Indeterminate OFF
Latch/reset voltage	22 Vdc min/15 Vdc
-Latch time reset	15 ms at 22 Vdc
-Reset time/reset	20 ms at 15 Vdc
-Maximum set and reset voltage, 7 A (shall not trip 7.5 A circuit breaker)	

GENERAL CHARACTERISTICS

Contact Data	Main Contacts	Aux Contacts
-Configuration	3PST NO, latch	3X SPST NC, 6X SPST NO
-Supply voltage	115/200 Vac	28 Vdc
-Continuous current	385 Amp at .75PF	100mA; compatible with a 7.5A circuit breaker
-Rupture current	1600 Amp	-
-Overload	700 Amp	-
-Maximum contact bounce	3 ms	3 ms
-Simultaneous operation	3 ms	3 ms
Electrical life		
-At ambient pressure	25,000 operations	
-At 45,000 ft	25,000 operations	
Mechanical life	100,000 operations	
Insulation resistance	≥ 40 M Ω at 500 Vrms	
Dielectric Strength		
-All circuits to ground	1500 Vrms	
-Circuit to circuit to ground and aux contacts	1250 Vrms	
Altitude	45,000 ft	
Continuous operating temperature range	-15°C to +65°C	

NUMBERING SYSTEM

	WL-X9YN - XXX
Basic series designation_____	
Customer configuration_____	



SCHEMATIC

