

# ENGINEERING DATA SHEET

# SO9005

SOCKET FOR RELAYS  
2 AMP



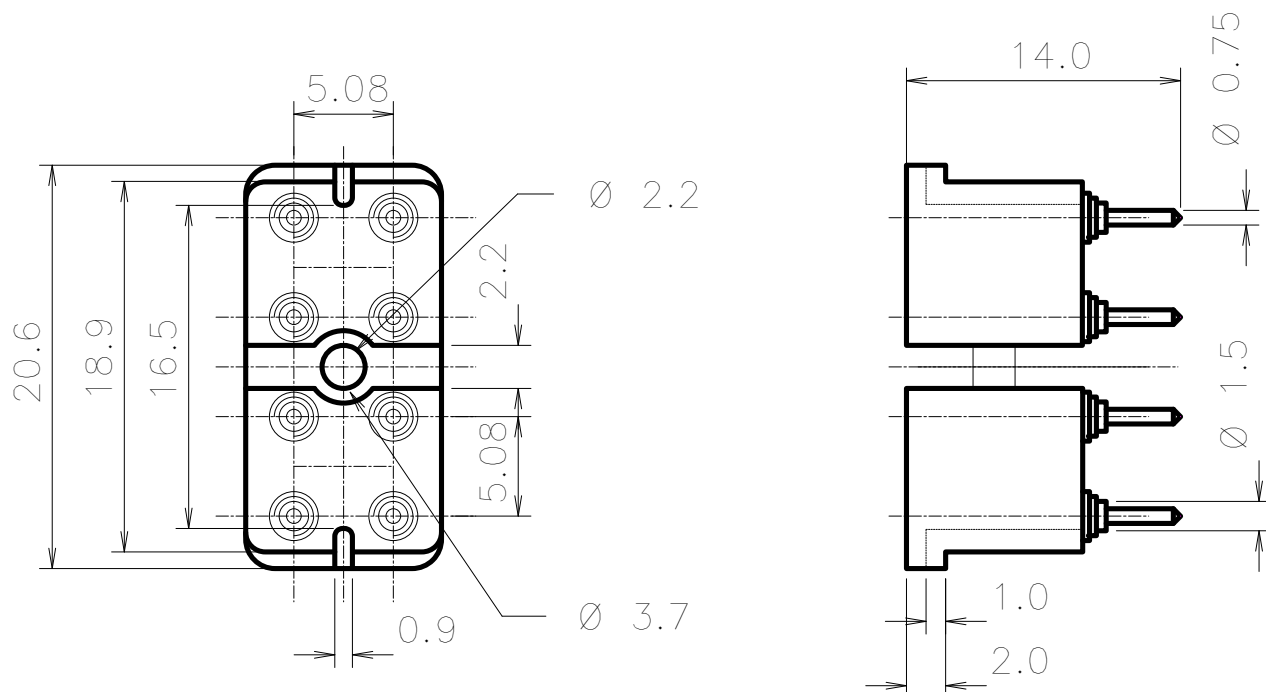
BASIC SOCKET SERIES DESIGNATION FOR:

**Series F250, F257, W260**

DESIGNED TO THE STANDARDS AND REQUIREMENTS OF:

**MIL-S-12883/44**

## DIMENSIONS



## GENERAL CHARACTERISTICS

Temperature range	-65°C to +125°C
Weight	10 grams
Terminal designations	On coupling face
Insulation resistance	1200 M $\Omega$
Contact resistance	2 m $\Omega$



Leach International  
[www.leachintl.com](http://www.leachintl.com)

**North America**  
6900 Orangethorpe Ave.  
P.O. Box 5032  
Buena Park, CA 90622 USA

Tel: (01) 714-736-7599  
Fax: (01) 714-670-1145

**Europe, SA**  
2 Rue Goethe  
57430 Sarralbe  
France

Tel: (33) 3 87 97 98 97  
Fax: (33) 3 87 97 84 04

**Asia-Pacific Ltd.**  
20/F Shing Hing Commercial Bldg.  
21-27 Wing Kut Street  
Central, Hong Kong

Tel: (852) 2 191 2886  
Fax: (852) 2 389 5803

Data sheets are for initial product selection and comparison. Contact Leach International prior to choosing a component.