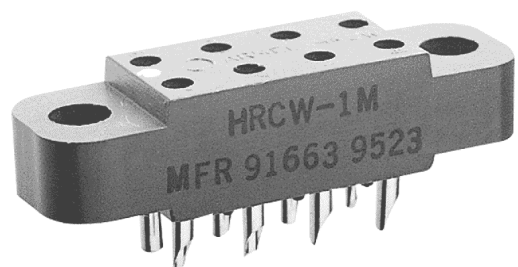


ENGINEERING DATA SHEET

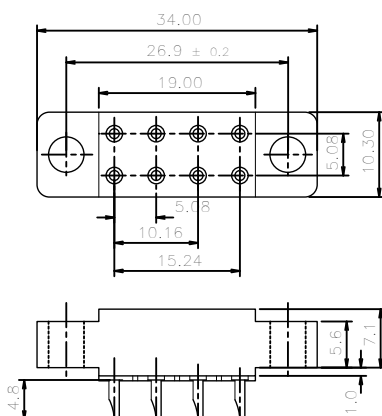
HRCW RELAY SOCKET 2 AMP



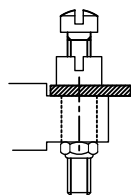
BASIC SOCKET SERIES DESIGNATION FOR:

SERIES F250, F257, W260, WB260, 144

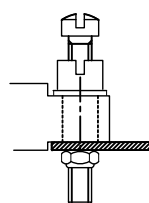
DIMENSIONS



BOTTOM MOUNT
HRCW-1M



TOP MOUNT
HRCW-22M



GENERAL CHARACTERISTICS

Temperature range	-65°C to +125°C
Weight	10 grams
Dielectric strength	
- Contact to contact at sea level	2700 Vrms / 50 Hz
- Coil to ground at sea level	2250 Vrms / 50 Hz
Contact to contact at altitude 25,000 m	560 Vrms / 50 Hz
Contact to ground at altitude 25,000 m	500 Vrms / 50 Hz



Leach International
www.leachintl.com

North America
6900 Orangethorpe Ave.
P.O. Box 5032
Buena Park, CA 90622 USA

Tel: (01) 714-736-7599
Fax: (01) 714-670-1145

Europe, SA
2 Rue Goethe
57430 Sarralbe
France

Tel: (33) 3 87 97 98 97
Fax: (33) 3 87 97 84 04

Asia-Pacific Ltd.
20/F Shing Hing Commercial Bldg.
21-27 Wing Kut Street
Central, Hong Kong

Tel: (852) 2 191 2886
Fax: (852) 2 389 5803

Data sheets are for initial product selection and comparison. Contact Leach International prior to choosing a component.