

# ENGINEERING DATA SHEET

# SERIES AJ

CONTACTOR  
1PST-DM, 400 AMP



**APPLICATION NOTES:**

- [101](#)
- [102](#)
- [103G](#)
- [007](#)

Balanced-Force Design hermetically sealed power contactor

Contact arrangement **SPST-N.O.**  
 Meets the requirements of **MIL-PRF-6106**  
 Qualified to **M6106/33**

**PRINCIPLE TECHNICAL CHARACTERISTICS**

Contacts rated at **28 Vdc**  
 Weight **1.75lbs max**  
 Auxiliary contact models available.

**CAUTION: The use of any coil voltage less than the rated coil voltage will compromise the operation of the contactor. Special units for low coil voltage applications are available. Consult factory.**

**CONTACT ELECTRICAL CHARACTERISTICS**

Contact rating - Amp per pole [1]	Main 28 Vdc	Auxiliary-DB/DM (Circuit No.4) 28 Vdc or 155V/400 Hz	Auxiliary-SP (All circuits except No.4)
Resistive	400	5	
Inductive [2]	150	5	5
Motor [6]	250	-	3
Lamp	-	1	-
Special motor load [7]	-	-	1
Overload	2400	-	-
Rupture	3000	-	-



Leach International  
www.leachintl.com

North America  
6900 Orangethorpe Ave.  
P.O. Box 5032  
Buena Park, CA 90622 USA

Tel: (01) 714-736-7599  
Fax: (01) 714-670-1145

Europe, SA  
2 Rue Goethe  
57430 Sarralbe  
France

Tel: (33) 3 87 97 98 97  
Fax: (33) 3 87 97 84 04

Asia-Pacific Ltd.  
20/F Shing Hing Commercial Bldg.  
21-27 Wing Kut Street  
Central, Hong Kong

Tel: (852) 2 191 2886  
Fax: (852) 2 389 5803

Data sheets are for initial product selection and comparison. Contact Leach International prior to choosing a component.

**COIL CHARACTERISTICS (Vdc)****SERIES AJ**

CODE	A Vdc	B Vdc	C Vdc	N,NA [5] Vdc
Nominal operating voltage	28	12	6	28
Maximum operating voltage	29	14.5	7.3	29
Maximum pickup voltage				
- Nominal at 71° C	18	9	4.5	18
- High temp test	19	9.8	5	19
- Cont. current test	21	10.5	5.3	21
Hold voltage	9	5.5	3.5	9
Drop-out voltage minimum	1.5	0.8	0.4	1.5
Coil resistance Ohms ±10% at +25° C	60	15	4	60

**GENERAL CHARACTERISTICS**

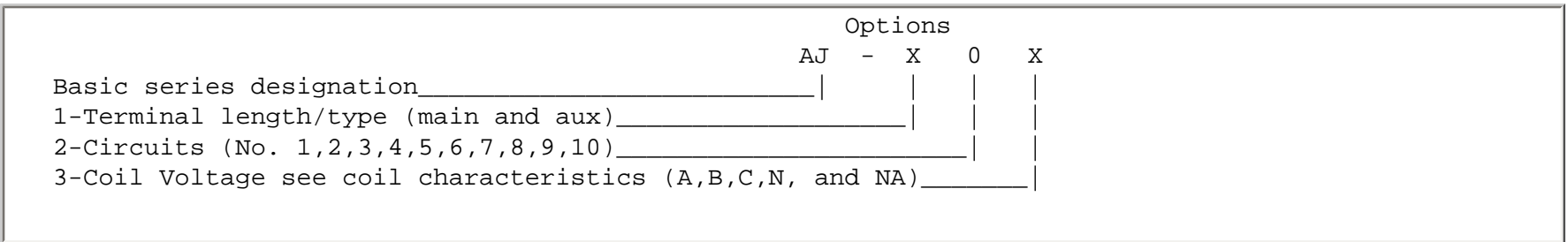
Temperature range	-55°C to +71°C
Minimum operating cycles (life) at rated load	50,000 [7]
Minimum operating cycles (life) at 25% rated load	100,000
Dielectric strength at sea level	
- All circuits to ground and circuit to circuit	1500 Vrms
- Across open contacts and coil to ground and auxiliary contacts	1250 Vrms
Dielectric strength at altitude 50,000 ft	
- Main contacts	700 Vrms
- Coil and auxiliary contacts	500 Vrms
Insulation resistance: (At 500 Vdc)	100 M Ω min
Sinusoidal vibration	10 G / 75 to 500 Hz 5 G / 500 to 2000 Hz
Shock	25 G
Maximum contact opening time under vibration and shock	10 μs
Operate time at nominal voltage	35 ms max
Release time at nominal voltage	15 ms max
Contact bounce at nominal voltage	4 ms max

**NOTES**

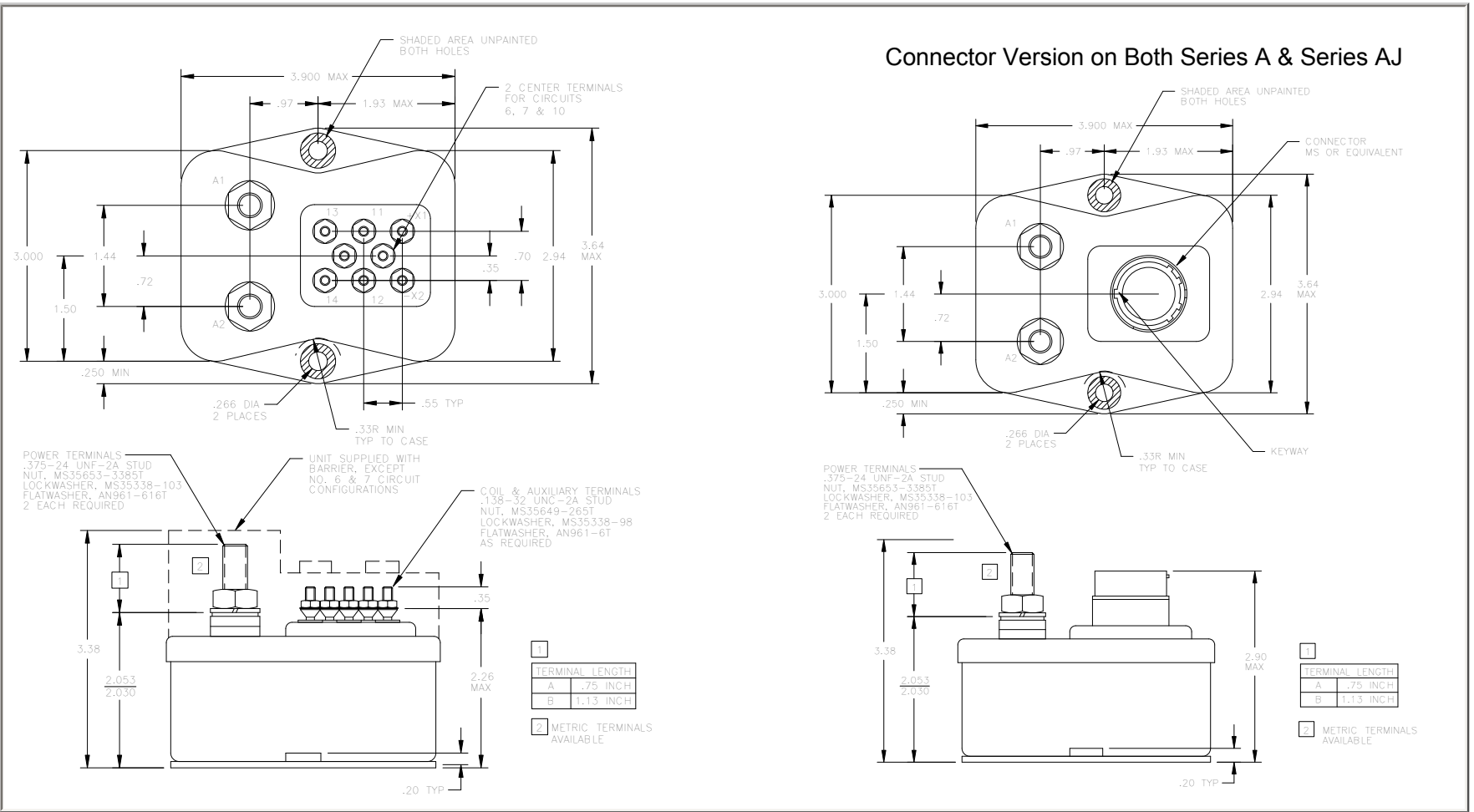
- [1] Standard Intermediate current test applicable.  
[2] Inductive load life: 20,000 cycles.  
3. Applicable military specification: MIL-R-6106.  
4. Special models available upon request, please contact factory.  
[5] "N", "NA" coils have back EMF suppression to 42 volts maximum.  
[6] Off time for motor load test shall be 6 seconds maximum.  
[7] Must meet 20,000 cycles of special motor load test (engine start): see table 1, page 3.  
[8] Relay will not operate, nor will it be damaged by the application of reverse polarity.

**NUMBERING SYSTEM**

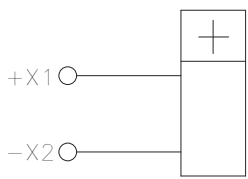
**SERIES AJ**



LEACH PART NUMBER	MIL-R6106/33 DASH NUMBER	COIL SUPPRESSION (BACK EMF)	CIRCUIT DIAGRAM	COIL DIAGRAM	COVER HEIGHT DIMENSIONS	TERMINAL LENGTHS
AJ-A4A-153	040	-	4	1	-	0.75
AJ-A4NA-154	041	Applicable	4	3	-	0.75
AJ-A4NA-155	042	Applicable	4	3	3.38	0.75
AJ-A4A-156	043	-	4	1	3.38	0.75
AJ-B8NA-157	044	Applicable	8	3	3.38	1.13
AJ-B8A-158	045	-	8	1	3.38	1.13
AJ-A2NA-159	046	Applicable	2	3	3.38	0.75
AJ-A3NA-160	047	Applicable	3	3	3.38	0.75
AJ-A2A-161	048	-	2	1	3.38	0.75
AJ-A3A-162	049	-	3	1	3.38	0.75
AJ-A8NA-163	050	Applicable	8	3	3.38	0.75
AJ-A8A-164	051	-	8	1	3.38	0.75
AJ-B9NA-165	052	Applicable	9	3	3.38	1.13
AJ-B9A-166	053	-	9	1	3.38	1.13
AJ-A9NA-167	054	Applicable	9	3	3.38	0.75
AJ-A9A-168	055	-	9	1	3.38	0.75
AJ-B7NA-169	056	Applicable	7	3	-	1.13
AJ-B7A-170	057	-	7	1	-	1.13
AJ-A7NA-171	058	Applicable	7	3	-	0.75
AJ-A7A-172	059	-	7	1	-	0.75
AJ-B8N-173	060	Applicable	8	2	3.38	1.13
AJ-B9N-174	061	Applicable	9	2	3.38	1.13
AJ-B7N-175	062	Applicable	7	2	-	1.13
AJ-A4N-176	063	Applicable	4	2	N/A	0.75
AJ-A4N-177	064	Applicable	4	2	3.38	0.75
AJ-B4A-178	065	-	4	1	3.38	1.13
AJ-B4NA-179	066	Applicable	4	3	3.38	1.13
AJ-B4N-180	067	Applicable	4	2	3.38	1.13
AJ-A8N-181	068	Applicable	8	2	3.38	0.75
AJ-A2N-182	069	Applicable	2	2	3.38	0.75
AJ-B2A-183	070	-	2	1	3.38	1.13
AJ-B2NA-184	071	Applicable	2	3	3.38	1.13
AJ-B2N-185	072	Applicable	2	2	3.38	1.13
AJ-A3N-186	073	Applicable	3	2	3.38	0.75
AJ-B3A-187	074	-	3	1	3.38	1.13
AJ-B3NA-188	075	Applicable	3	3	3.38	1.13
AJ-B3N-189	076	Applicable	3	2	3.38	1.13
AJ-A9N-190	077	Applicable	9	2	3.38	0.75
AJ-A7N-191	078	Applicable	7	2	-	0.75

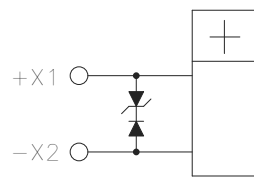


COIL DIAGRAMS



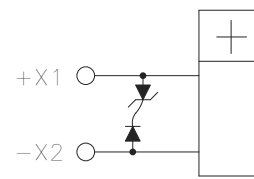
STANDARD COIL  
"A", "B", "C"

1



SUPPRESSED COIL  
"N"  
28 VDC

2



SUPPRESSED COIL  
"NA"  
28 VDC  
FUSABLE LINK, RELAY WILL CONTINUE TO OPERATE SHOULD COIL SUPPRESSION BE IN A FAILURE MODE

3

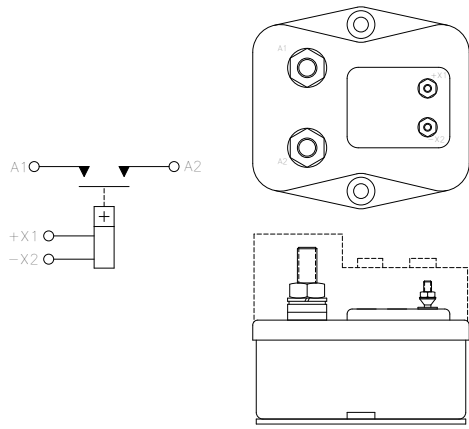
TABLE 1-SPECIAL MOTOR LOAD

ELAPSED TIME SECONDS	STARTER CURRENT AMPERES
0 (INITIAL)	1200
1	1000
2	1000
3	900
4	800
5	700
6	600
7 TO 60	400

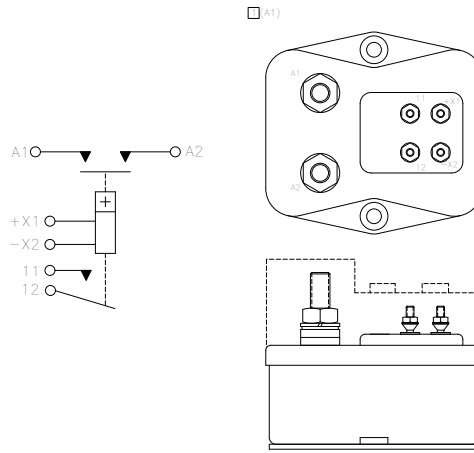
1 MUST BE ABLE TO MEET TABLE 1 REQUIREMENTS FOR THREE CYCLES WITH ONLY 10 SECONDS OFF BETWEEN CYCLES. AT THE END OF THREE CYCLES, OFF TIME WILL BE 5 MINUTES, MINIMUM.

2 THE START CYCLE MAY BE ABORTED ANY TIME DURING THIS PERIOD.

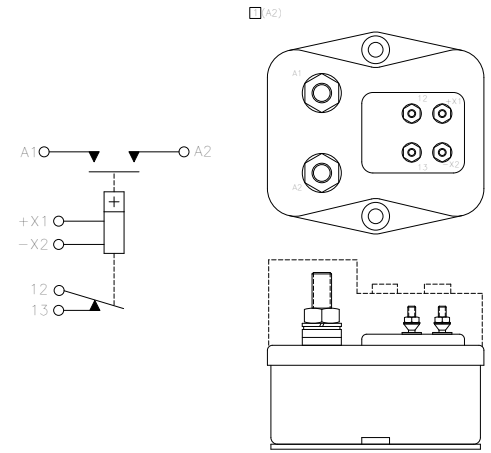
CIRCUIT DIAGRAM NO 1



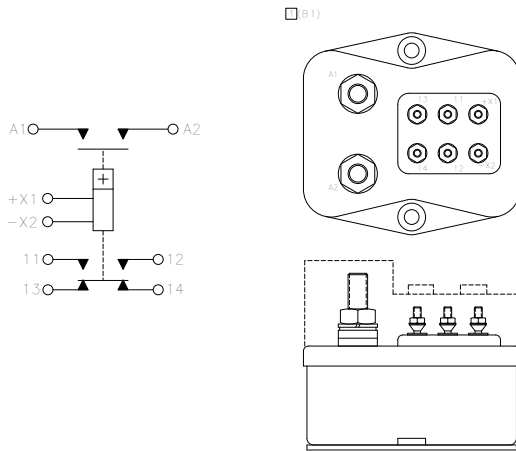
CIRCUIT DIAGRAM NO 2



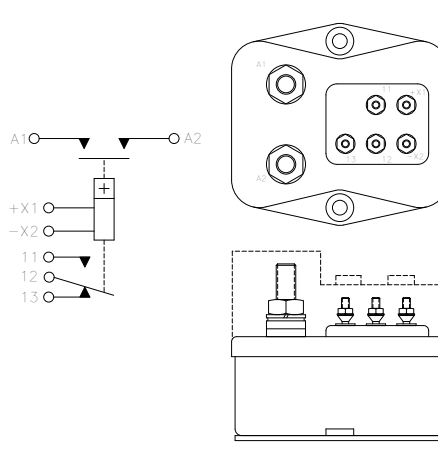
CIRCUIT DIAGRAM NO 3



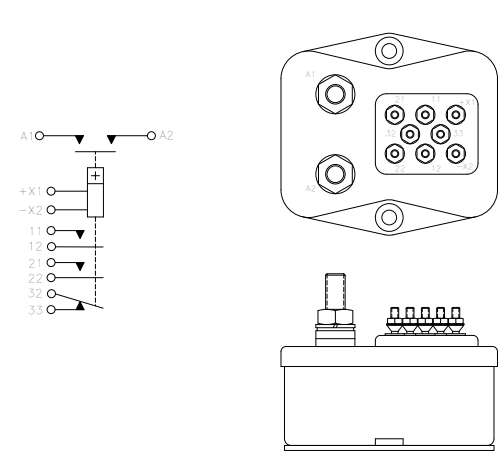
CIRCUIT DIAGRAM NO 4



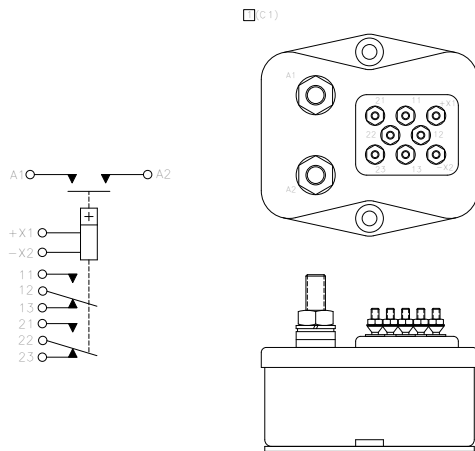
CIRCUIT DIAGRAM NO 5



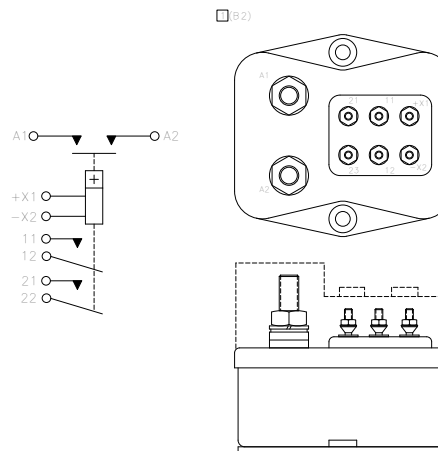
CIRCUIT DIAGRAM NO 6



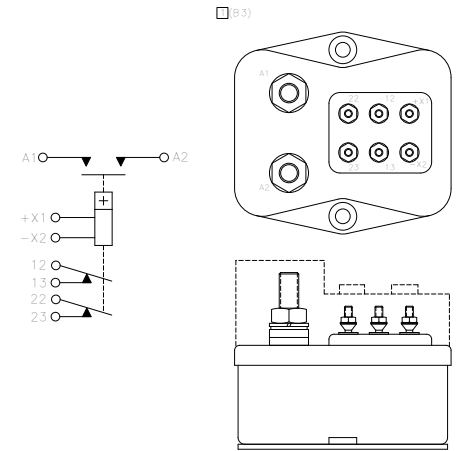
CIRCUIT DIAGRAM NO 7



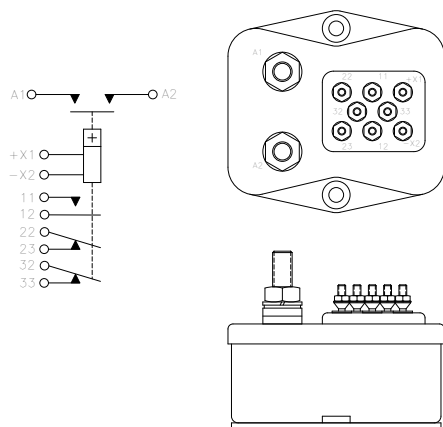
CIRCUIT DIAGRAM NO 8



CIRCUIT DIAGRAM NO 9



CIRCUIT DIAGRAM NO 10



[1] MIL-R-6106/33 CIRCUIT DESIGNATORS

NOTE: Although all configuration and / or terminal type options are available, some combinations may require a setup charge and be subject to minimum order size.

## DERATING OF CONTACTS FOR DC VOLTAGES ABOVE NOMINAL RATING

To establish a standard for the derating of relay contacts is, at best, a subjective practice. Limitations are governed by the type of relay, contact gap, maximum voltage capabilities of the relay contact system, and the contact material.

The most common method is to derate the contacts by use of the Power Formula, using the known current and voltage.

This method is valid only for **Resistive Loads**, and is an approximation only; keeping in mind the limitations mentioned above.

$$\text{Power} = IE \text{ (Current x Voltage)}$$

$$I_2 E_2 = 2/3 I_1 E_1$$

Example:

A designer is working with a 55 volt DC system and has a relay rated at 10 amps resistive at 28 volts DC. What is the maximum current that can be switched at 55 Vdc.

$$I_1 = 10 \text{ Amperes}$$

$$E_1 = 28 \text{ VDC}$$

$$E_2 = 55 \text{ VDC}$$

$$I_2 = ? \text{ (Current ratings at 55 VDC Resistive)}$$

$$I_2 E_2 = 2 I_1 E_1 / 3$$

$$I_2 = 2 I_1 E_1 / E_2 \times 3$$

$$= 2 (10 \times 28) / 55 \times 3$$

$$= 560 / 165$$

$$I_2 = 3.4 \text{ Amperes at 55VDC}$$

In addition, the user should always be concerned about the following:

1. Derating contacts that are rated for less than 10 Amperes at nominal voltage.
2. Derating contacts for use in system voltages above 130 Volts DC

**RELAYS AND TEMPERATURE VARIATIONS**

Most relay parameters are specified as maximum values over the rated temperature range of the specific relay. Users often find that key parameters differ significantly at ambient temperature (20-25°C) and sometimes fall into the trap of specifying their system around these ambient parameters. Additionally the actual temperature experienced by the relay can be far in excess of existing ambient temperatures due to the heat generated by the coil current and the contact load. Figure 1 is the summary of temperature effects on relay electrical characteristics.

Temperature	Resistance	Current	Operating Voltage	Release Voltage	Operate Time	Release Time
Increase	UP	DOWN	UP	UP	UP	UP
Decrease	DOWN	UP	DOWN	DOWN	DOWN	DOWN

**Fig. 1**

The following formulas are sometimes useful in calculating the effects shown above.

1. Change in coil resistance due to change of ambient temperature can be calculated by the following formula.

$$R = R_{20} [1 + .0039 (T-20)]$$

Where: R = Coil resistance at given temperature  
 R<sub>20</sub> = Coil resistance at 20°C  
 T = °C Ambient temperature

"Rule of Thumb" : For each 10°C change of temperature, coil resistance will change approximately 4%.

2. High and low temperature pick up voltage:

$$E_2 = E_1 K_2,$$

Where: E<sub>2</sub> = Pick Up Voltage at T<sub>2</sub> temperature  
 E<sub>1</sub> = Pick Up Voltage at 20°C  
 K<sub>2</sub> = Coefficient of correction found on the graph in Fig. 2 at T<sub>2</sub>

3. Calculation of coil temperature rise when R initial and R final are known:

$$\Delta T = (234.5 + T_1) (R_2/R_1 - 1)$$

$\Delta T$  = Temperature rise ( $^{\circ}\text{C}$ )

$T_1$  = Initial temperature ( $^{\circ}\text{C}$ )

$R_1$  = Initial resistance (Ohms)

$R_2$  = Final resistance (Ohms)

$$R_2 = K_2 R_1$$

Temperature can also be found by making the  $R_2/R_1$  ratio = the coefficient of correction graph in Fig. 2, and then finding the corresponding temperature.

### TEMPERATURE CORRECTION CHART FOR RESISTANCE

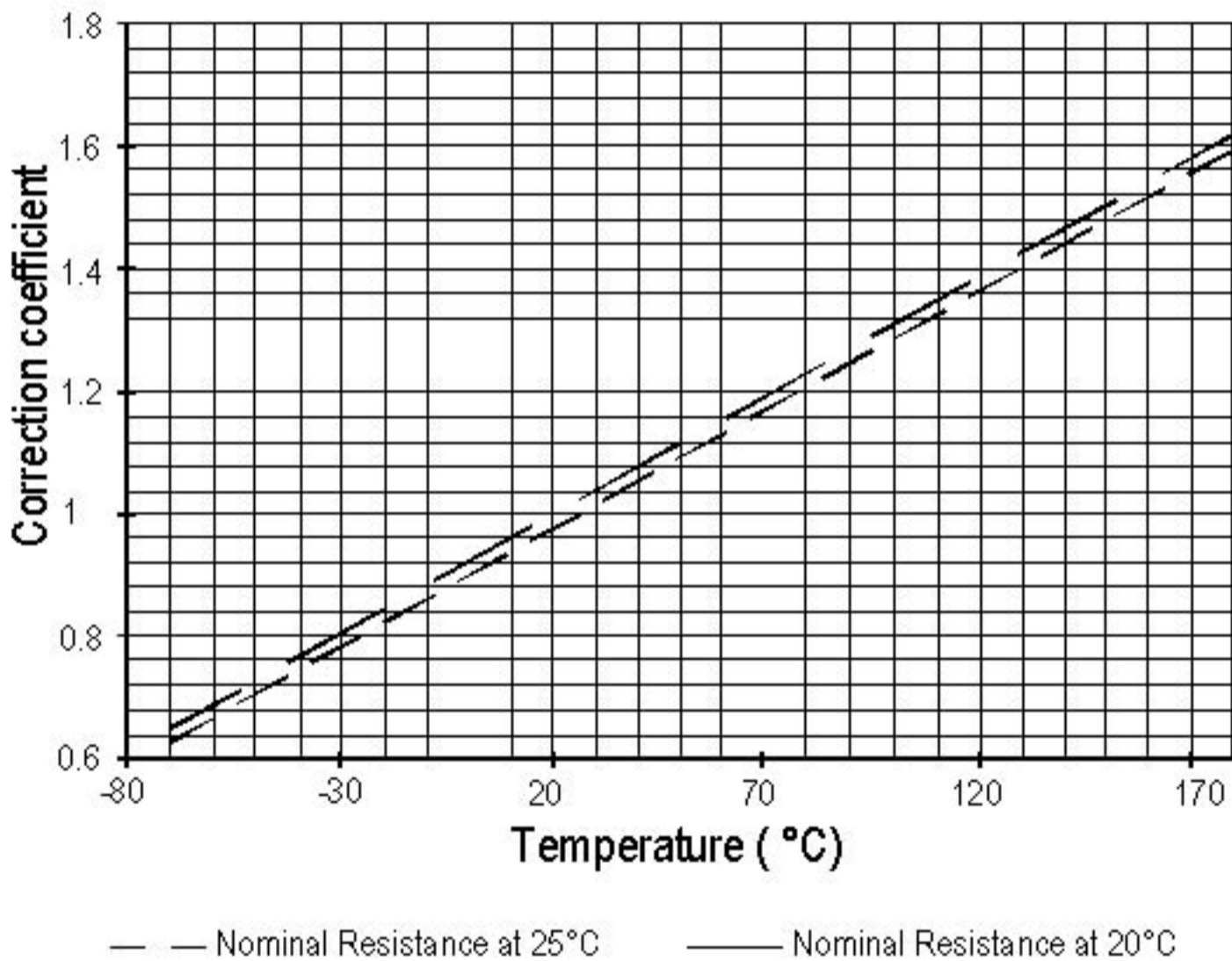


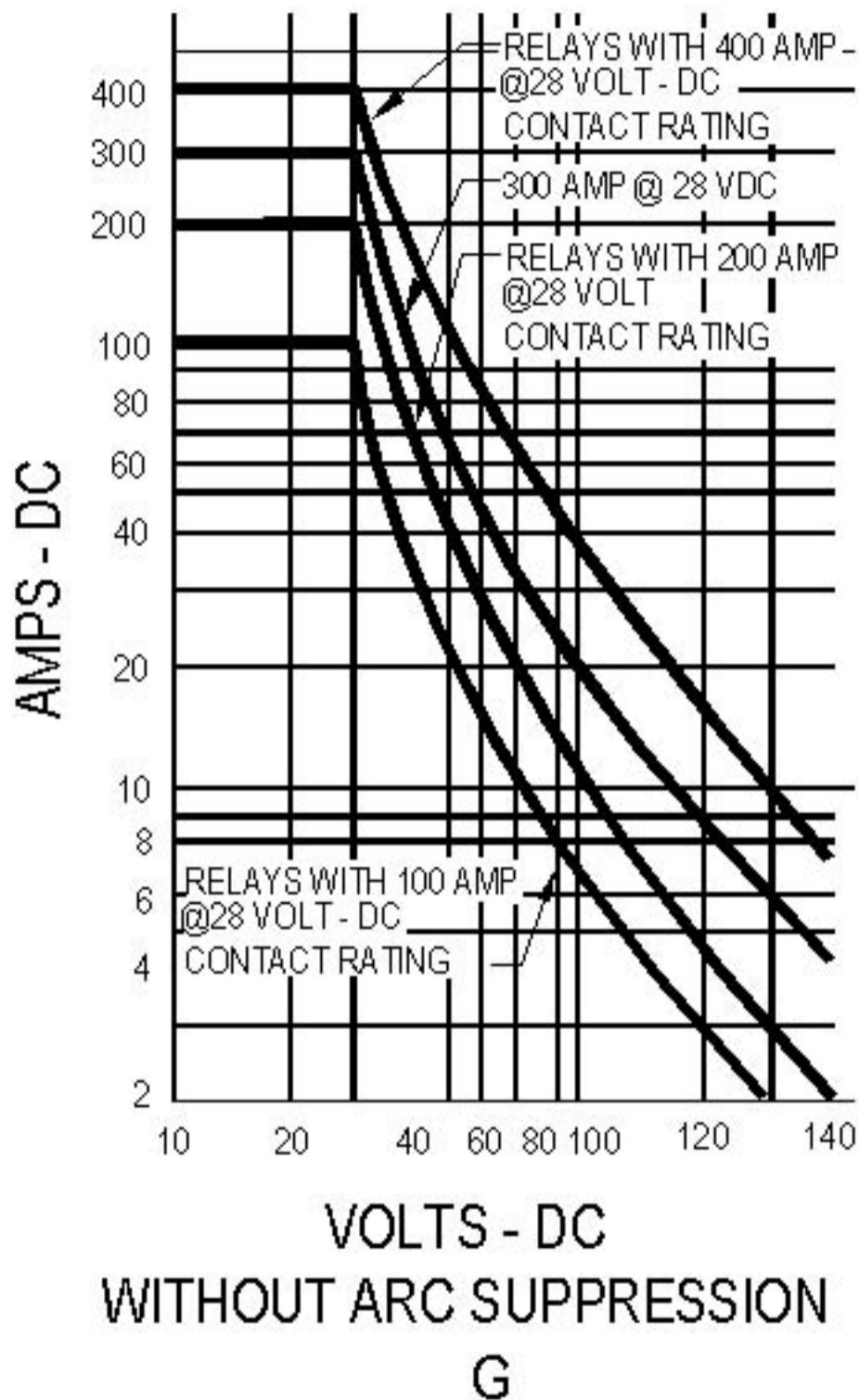
Fig. 2

EXAMPLE:

Catalog indicates coil resistance of 290 ohm at 25 $^{\circ}\text{C}$ . What is the value at 125 $^{\circ}\text{C}$ ?

From the chart:  $290 \times 1.39 = 403.31$  Ohms.

**CURVES FOR DC VOLTAGES ABOVE NORMAL RATING: RESISTIVE LOAD ONLY  
(without arc suppression)**



## SUPPRESSOR DEVICES FOR RELAY COILS

The inductive nature of relay coils allows them to create magnetic forces which are converted to mechanical movements to operate contact systems. When voltage is applied to a coil, the resulting current generates a magnetic flux, creating mechanical work. Upon deenergizing the coil, the collapsing magnetic field induces a reverse voltage (also known as back EMF) which tends to maintain current flow in the coil. The induced voltage level mainly depends on the duration of the deenergization. The faster the switch-off, the higher the induced voltage.

All coil suppression networks are based on a reduction of speed of current decay. This reduction may also slow down the opening of contacts, adversely effecting contact life and reliability. Therefore, it is very important to have a clear understanding of these phenomena when designing a coil suppression circuitry.

### Typical coil characteristics

On the graph below, the upper record shows the contacts state. (High level NO contacts closed, low level NC contacts closed, intermediate state contact transfer). The lower record shows the voltage across the coil when the current is switched off by another relay contact.

The surge voltage is limited to -300V by the arc generated across contact poles. Discharge duration is about 200 microseconds after which the current change does not generate sufficient voltage. The voltage decreases to the point where the contacts start to move, at this time, the voltage increases due to the energy contained in the NO contact springs. The voltage decreases again during transfer, and increases once more when the magnetic circuit is closed on permanent magnet.

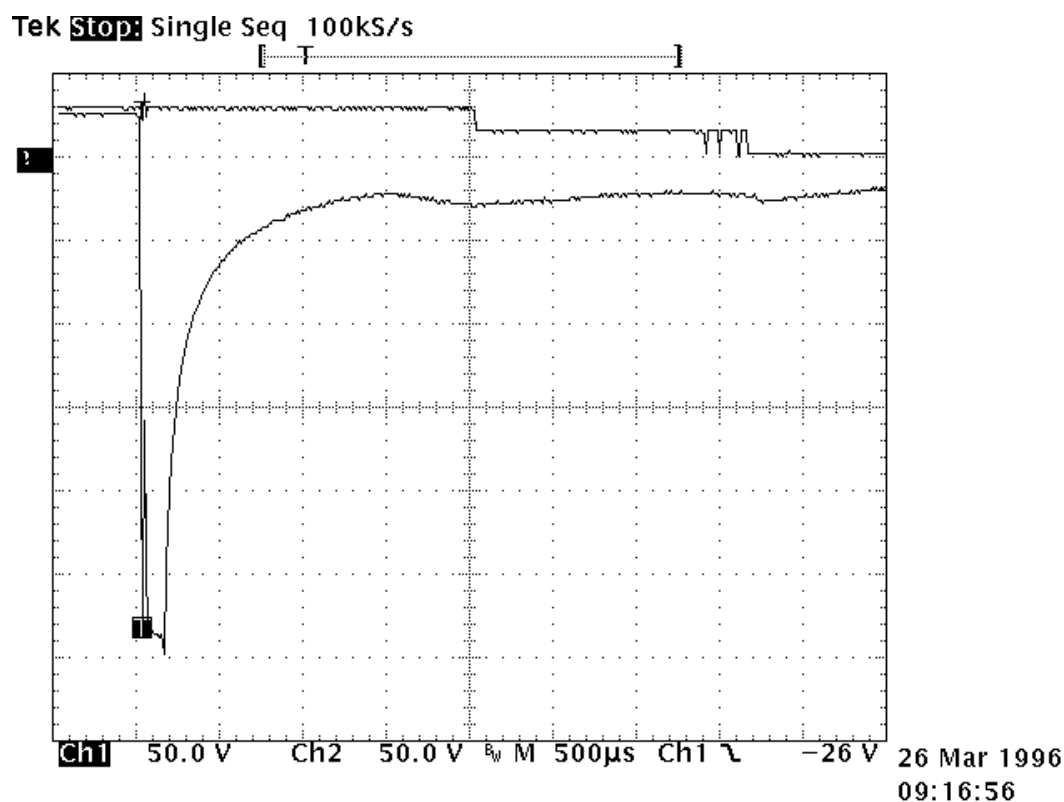
Operating times are as follows:

Time to start the movement 1.5ms

Total motion time 2.3ms

Transfer time 1.4ms

Contact State



## Types of suppressors:

### Passive devices.

#### The resistor capacitor circuit

It eliminates the power dissipation problem, as well as fast voltage rises. With a proper match between coil and resistor, approximate capacitance value can be calculated from:

$$C = 0.02 \times T / R, \text{ where}$$

T = operating time in milliseconds

R = coil resistance in kiloOhms

C = capacitance in microFarads

The series resistor must be between 0.5 and 1 times the coil resistance. Special consideration must be taken for the capacitor inrush current in the case of a low resistance coil.

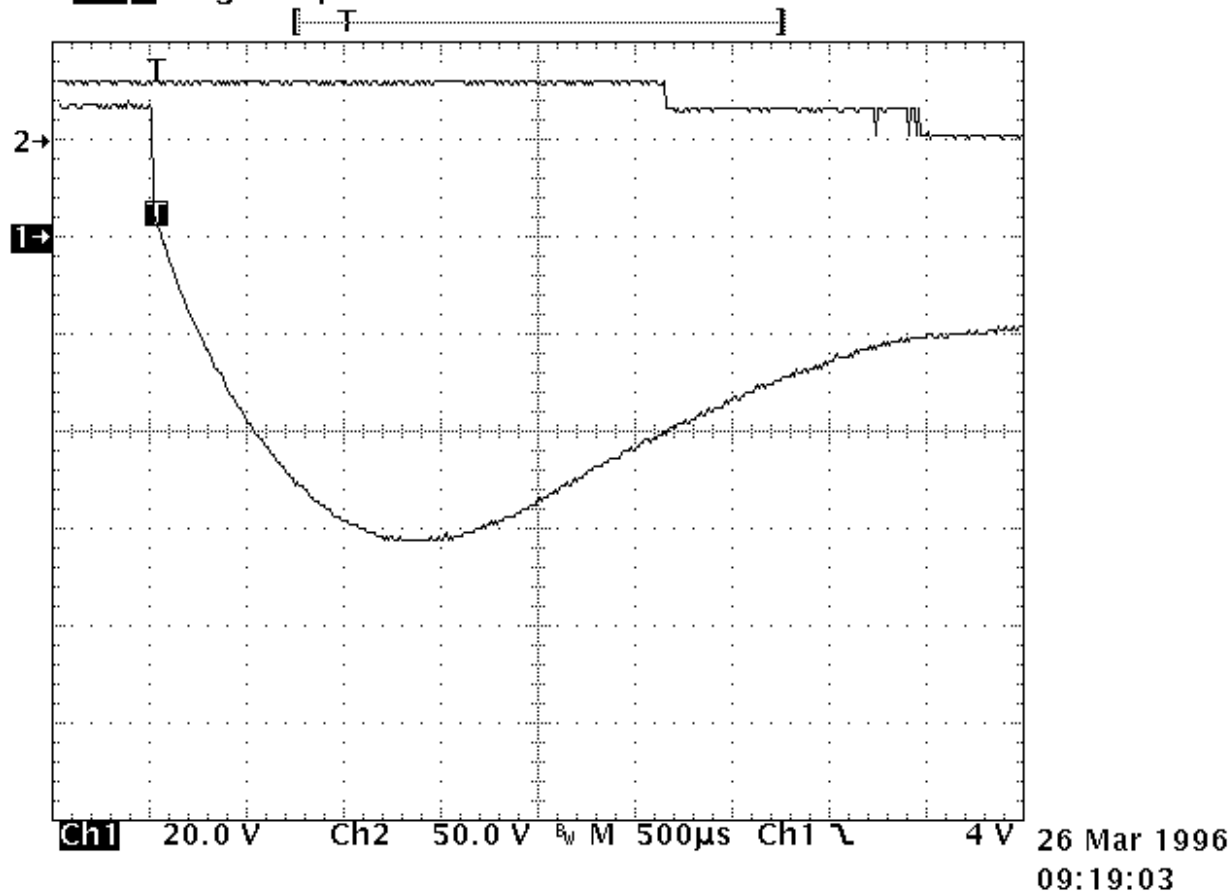
The record shown opposite is performed on the same relay as above. The operation time becomes:

- time to start the movement 2.3ms

- transfer time 1.2ms

The major difficulty comes from the capacitor volume. In our example of a relay with a  $290 \Omega$  coil and time delay of 8 ms, a capacitance value of  $C=0.5 \mu\text{F}$  is found. This non polarized capacitor, with a voltage of 63V minimum, has a volume of about  $1\text{cm}^3$ . For 150V, this volume becomes  $1.5 \text{cm}^3$ .

Tek **Stop**: Single Seq 100kS/s



### The bifilar coil

The principle is to wind on the magnetic circuit of the main coil a second coil shorted on itself. By a proper adaptation of the internal resistance of this second coil it is possible to find an acceptable equilibrium between surge voltage and reduction of the opening speed. To be efficient at fast voltage changes, the coupling of two coils must be perfect. This implies embedded windings. The volume occupied by the second coil reduces the efficiency of the main coil and results in higher coil power consumption. This method cannot be applied efficiently to products not specifically designed for this purpose.

### The resistor (parallel with the coil)

For efficient action, the resistor must be of the same order of magnitude as the coil resistance. A resistor 1.5 times the coil resistance will limit the surge to 1.5 times the supply voltage. Release time and opening speed are moderately affected. The major problem is the extra power dissipated.

### **Semi-conductor devices**

#### The diode

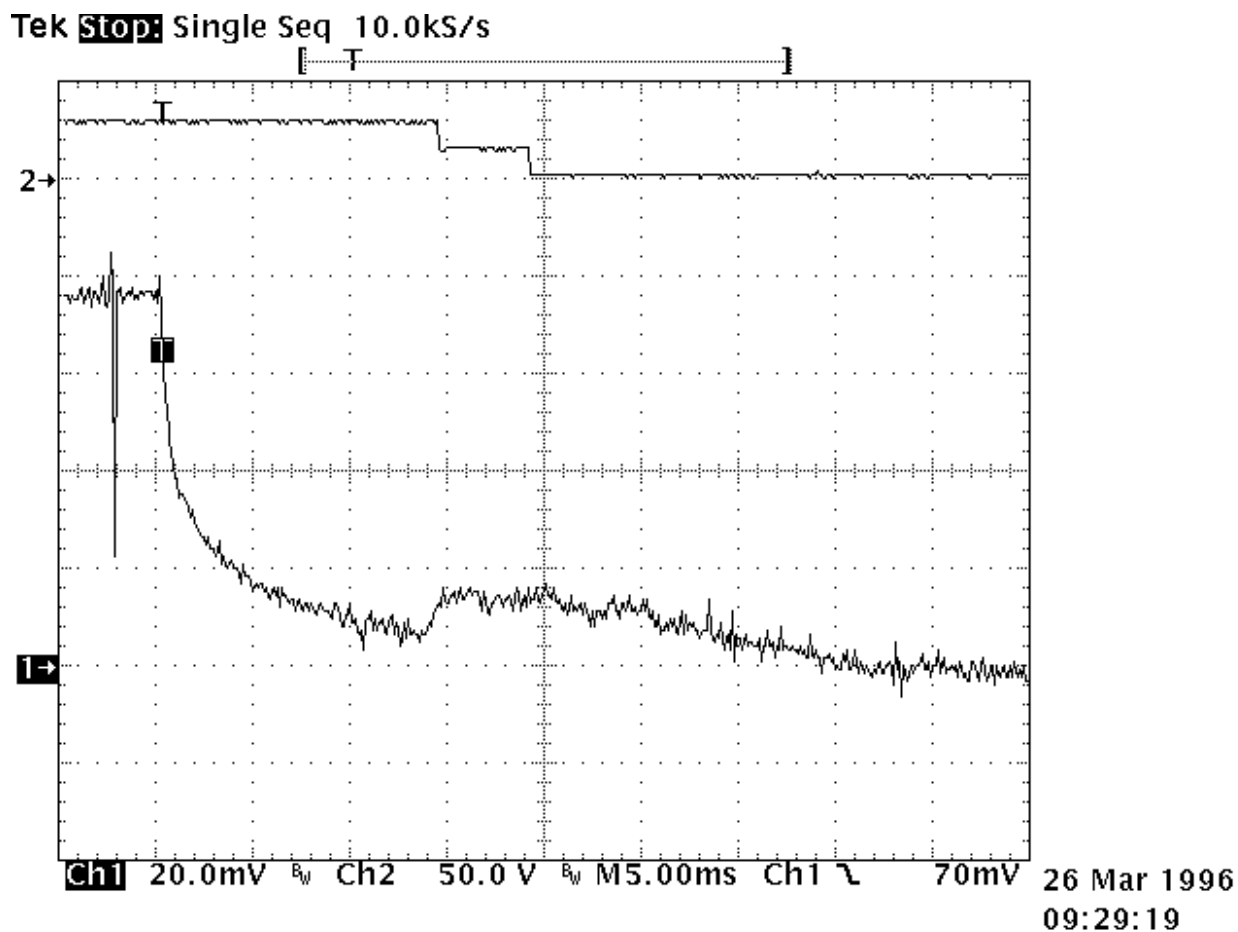
It is the most simple method to totally suppress the surge voltage. It has the major disadvantage of the higher reduction of contact opening speed. This is due to the total recycling, through the diode, of the energy contained in the coil itself. The following measurement is performed once again on the same relay. Operation times are given by the upper curve:

- time to start the movement 14ms
- transfer time 5ms

These times are multiplied by a coefficient from 4 to 8.

The lower curve shows the coil current. The increase prior to NO contact opening indicates that the contact spring dissipates its energy. At the opening time the current becomes constant as a result of practically zero opening speed.

Due to this kind of behavior, this type of suppression must be avoided for power relays. For small relays which have to switch low currents of less than 0.2 A, degradation of life is not that significant and the method may be acceptable.



The diode + resistor network

It eliminates the inconvenience of the resistor alone, explained above, and it limits the action of a single diode. It is now preferred to use the diode + zener network.

The diode + zener network

Like the resistor, the zener allows a faster decurrent decay. In addition it introduces a threshold level for current conduction which avoids the recycling of energy released during contact movement.

The lower curve on the opposite record demonstrates those characteristics. Voltage limitation occurs at 42V. The two voltage spikes generated by internal movement are at lower levels than zener conduction. As a result, no current is recycled in the coil.

The opening time phases are as follows:

- time to start the movement 2.6ms
- total motion time 2.4ms
- transfer time 1.4ms

The release time is slightly increased. The contacts' opening speed remains unchanged.

