

Series - W9600

Wide Button Moisture-Proof Pushbutton Switches

FEATURES

- Splash-proof
- Wide diameter button
- Variety of button colors available
- Momentary snap action
- Solder lug terminals
- RFI shielded version (W9623)

SPECIFICATIONS

- Meets MILS-8805 seal level 6 (splash-proof)
- Electrical life: 25,000 operations minimum at rated current
- Mechanical life: 200,000 operations (50,000 operations for 3 terminal design)
- Operating force: 4 ± 1 lbs (176N \pm 4.4N)
- Total plunger travel: 0.080 in. \pm .015 (0.21mm \pm .003) approx.
- Vibration: 10-2000Hz 15g.
- Shock: 100g, 6 Ms sawtooth
- Weight with adapter: 0.048 lbs approx.
- EMI/RFI shielded (W9623 only)

CURRENT RATINGS

Part Number	Number of Poles	Type of Operation	28VDC [Ⓢ]			125VAC	
			Resistive	Inductive	Lamp	Resistive	Inductive [Ⓢ]
W9600	1	Momentary	10	5	3	—	15
W9623	2	Circuit	10	5	3	—	—

[Ⓢ] p.f. = .75

[Ⓢ] 3 amps max. through center terminal.

SELECTION TABLE

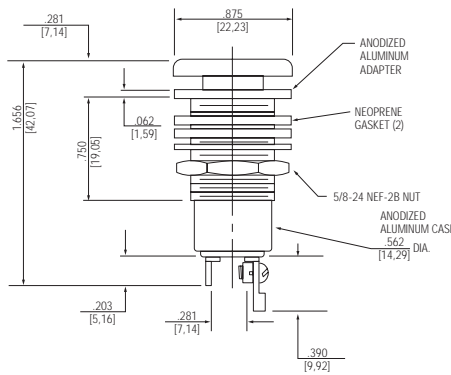
SERIES AND TYPE

W9600

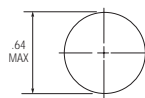


Base Catalog Number	Operation	Circuit and Schematic	Code Suffixes - Add to Cat. No.							
			Adapter Color		Pushbutton Color					
			Color	Code Suffix	Code Suffix	Code Suffix				
W9001	Momentary Snap Action	1 P.S.T.-N.O.	Black	None	Red	R				
W9002		1 P.S.T.-N.C.								
W9003		1 P-2 Circuit								
W9004		1 P.S.T. 3 Terminal N.O.					Clear	C	Black	B
W9005		1 P.S.T. 3 Terminal N.C.							Gray	None
W9006		1 P.D.T.-N.O.-N.C.								

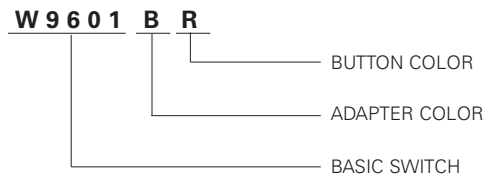
DIMENSIONS - W9600



PANEL CUTOUT



WHEN ORDERING SPECIFY...



STANDARD

0.00 = inches

[0,0] = mm

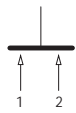
Dimensions for reference only.

PUSHBUTTON SWITCHES

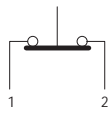
Series - W9600

Wide Button Moisture-Proof Pushbutton Switches

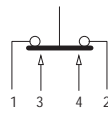
BASIC SWITCH & SCHEMATIC DIAGRAM



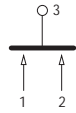
W9601



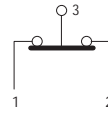
W9602



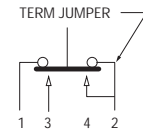
W9603



W9604
Center Term 3



W9605
Center Term 3



W9606

⊗ For W9606 or SPDT circuit, mount terminal jumper to terminal #2 and #4.



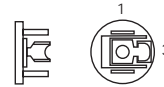
Normally Open



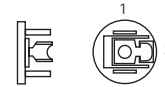
Normally Closed



Two Circuit



3 Terminal N.O.



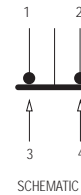
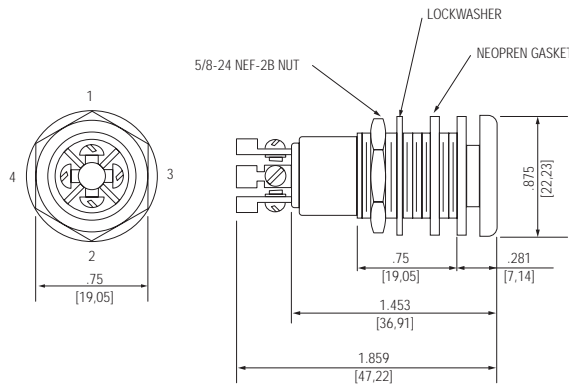
3 Terminal N.C.



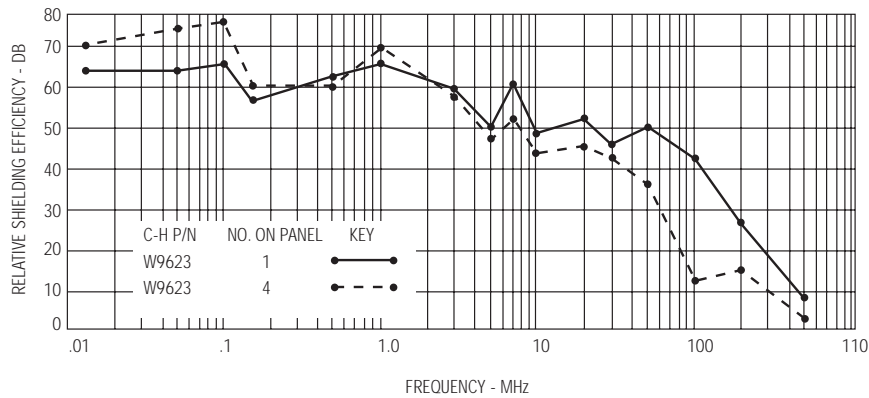
S.P.D.T.

TWO CIRCUIT MODEL W9623 EMI/RMI SHIELDED

W9623



SCHEMATIC



Graphic illustration defines relative shielding efficiency of RFI shielded component/ components over unshielded device.

STANDARD

0.00 = inches

[0,0] = mm

Dimensions for reference only.